



Fitzroy Inbuilt ★ ★ ★ ☆

Designed for Australian needs, the Fitzroy inbuilt has become a proven favourite.

Clean, fuss free design with high efficiency and heat output.

Neatly fits the cavity of existing gas/oil space heaters.

A mock installation kit makes your heater suitable for installation with timber or plasterboard (combustible surfaces). Refer to website for mock fireplace installation specifications.

Standard Features

- + Electronic ignition and controls
- + 3 heat and fan speed settings
- + Realistic eucalypt look logs
- + Standard mesh safety guard
- + Enhanced flame effect (except FITZIB-SMENB)
- + Metallic Black Finish (FITZIB-SMENB & FITZIB-SMEXB)
- + Platinum Finish (FITZIB-SMEXP)
- + Heats 80 m² on average
- + 3.6 star energy rating
- + 4 continuously monitored safety systems

Options

- + Fitzroy freestanding kit
- + Fitzroy glass kit
- + Remote thermostat
- + Spacer kit
- + Surround kit
- + Console kit
- + Inbuilt flue kit
- + Mock installation kit
- + Chimney plate



FITZIB-SMENB



FITZIB-SMEXB



FITZIB-SMENB shown with optional Freestanding Kit (FITZFSKITX-B)



FITZIB-SMEXP



Fitzroy Inbuilt heater specifications and dimensions

Models **FITZIB-SMENB / FITZIB-SMEXB / FITZIB-SMEXP**

Type	Inbuilt
Colours	Metallic black baked enamel or platinum finish
Gas consumption	26 MJ/hr
Gas type	Natural gas/LPG
Efficiency rating	3.6 stars ¹
Heat output	5.98 kW / 21.45 MJ/h
Heats on average	80 square metres (80 m ²)
Fan/heat settings	3 speed / 3 heat

Dimensions	Fascia
Height	651 mm
Width	808 mm
Depth	50 mm

Installation **Fireplace opening (brick & masonry)**

The purpose of these pages is to briefly illustrate the specifications. For full details refer to the comprehensive instructions included with the heater or visit www.cannonheaters.com.au. Whilst every effort is made to provide current information at the time this brochure was produced, continuing product development means that the enclosed specifications, images and literature may differ.

Gas connection via a 1/2" copper compression fitting.

A 10 amp socket within 1.5 m is required. Inbuilt models can be direct wired with an accessible double pole isolating switch

¹Tested to AS 4553:2008.

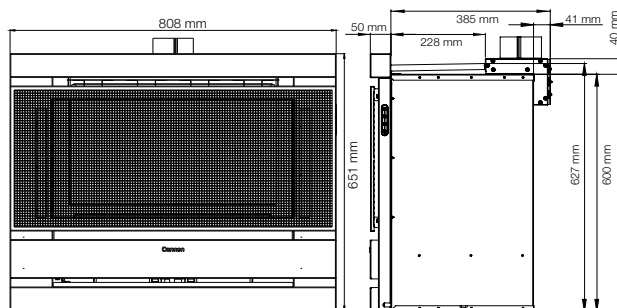
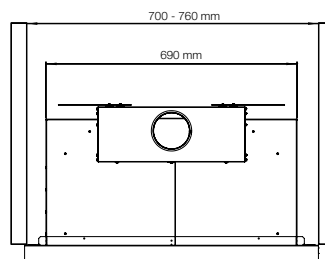
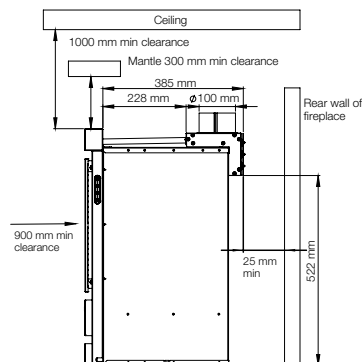
AVAILABLE FROM

	Max	Min
Height	640 mm	605 mm
Width	760 mm	700 mm
Depth	N/A	410 mm*

* Includes 25 mm clearance between flue spigot and rear brickwork

Maximum length of flue: 4.5m

Suitable for non-combustible or masonry/brick fireplaces or into a mock fireplace using a Mock Kit purchased separately.



FOR INSTALLATIONS IN NON COMBUSTIBLE ENCLOSURES: (Refer to installation instructions for further details).

Mock Fireplace Opening (combustible materials)*

	Max	Min
Height	640 mm	630 mm
Width	760 mm	730 mm
Depth	N/A	410 mm*

*If you have a larger opening than the maximum height indicated, a surround kit is recommended. *Includes 25 mm clearance between flue spigot and rear wall.



CRADLE MOUNTAIN FIREPLACES

T +61 3 6362 0922 F +61 3 6362 0999

sales@cradlemountainfireplaces.com.au

www.cradlemountainfireplaces.com.au